

## Generator set data sheet



**Model:** C66 D5L (B3.3)  
**Frequency:** 50 Hz  
**Fuel type:** Diesel

|                                 |           |
|---------------------------------|-----------|
| <b>Spec sheet:</b>              | S-6282-EN |
| <b>Noise data sheet (open):</b> | MSP-3033  |
| <b>Airflow data sheet:</b>      | MCP-2029  |

| <b>Fuel consumption</b> | <b>Standby</b>  |            |            |             | <b>Prime</b>    |            |            |             |
|-------------------------|-----------------|------------|------------|-------------|-----------------|------------|------------|-------------|
|                         | <b>kVA (kW)</b> |            |            |             | <b>kVA (kW)</b> |            |            |             |
| Ratings                 | 66 (53)         |            |            |             | 60 (48)         |            |            |             |
| Load                    | <b>1/4</b>      | <b>1/2</b> | <b>3/4</b> | <b>Full</b> | <b>1/4</b>      | <b>1/2</b> | <b>3/4</b> | <b>Full</b> |
| US gph                  | 1.2             | 2.0        | 3.0        | 4.1         | 1.2             | 1.8        | 2.7        | 4.1         |
| L/hr                    | 4.7             | 7.4        | 11.4       | 15.4        | 4.4             | 6.9        | 10.1       | 13.3        |

| <b>Engine</b>                  | <b>Standby rating</b>         | <b>Prime rating</b> |
|--------------------------------|-------------------------------|---------------------|
| Engine manufacturer            | Cummins                       |                     |
| Engine model                   | 4BTAA3.3-G13                  |                     |
| Configuration                  | In-line; 4 cylinder diesel    |                     |
| Aspiration                     | Turbocharged and after-cooled |                     |
| Gross engine power output, kWm | 62.6                          | 58                  |
| BMEP at set rated load, kPa    | 1538                          | 1428                |
| Bore, mm                       | 95                            |                     |
| Stroke, mm                     | 115                           |                     |
| Rated speed, rpm               | 1500                          |                     |
| Piston speed, m/s              | 5.75                          |                     |
| Compression ratio              | 19:1                          |                     |
| Lube oil capacity, L           | 8                             |                     |
| Overspeed limit, rpm           | 1650                          |                     |
| Regenerative power, kW         | N/A                           |                     |
| Governor type                  | Mechanical as standard        |                     |
| Starting voltage               | 12 V DC                       |                     |

| <b>Fuel flow</b>                                     |       |
|--|-------|
| Maximum fuel flow, L/hr                              | 45    |
| Maximum fuel inlet restriction, mm Hg (clean filter) | 101.6 |
| Maximum fuel inlet temperature, °C                   | 70    |

[www.macfarlanegenerators.com.au](http://www.macfarlanegenerators.com.au)

| <b>Air</b>                           | <b>Standby rating</b> | <b>Prime rating</b> |
|--------------------------------------|-----------------------|---------------------|
| Combustion air, m <sup>3</sup> /min  | 4.64                  | 4.19                |
| Maximum air cleaner restriction, kPa | 2.5                   |                     |

| <b>Exhaust</b>  |       |      |
|---|-------|------|
| Exhaust gas flow at set rated load, m <sup>3</sup> /min | 10.64 | 9.76 |
| Exhaust gas temperature, °C                             | 491   | 483  |
| Maximum exhaust back pressure, kPa                      | 10    |      |

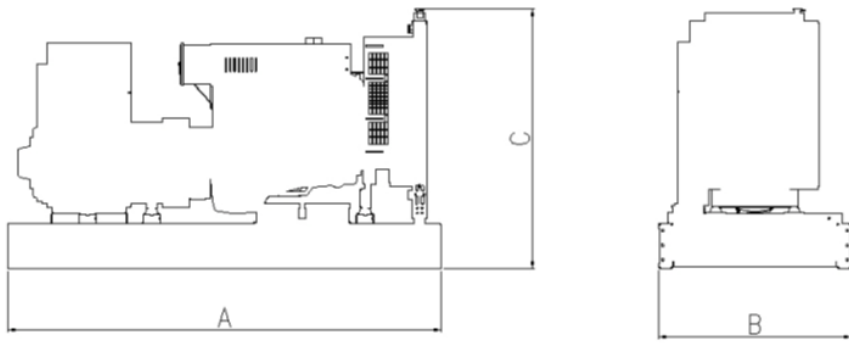
| <b>Standard set-mounted radiator cooling</b>                            |         |      |
|---|---------|------|
| Ambient design, °C (open genset at 12.7mm H <sub>2</sub> O restriction) | 55      |      |
| Fan load, kW <sub>m</sub>   | 2 +/- 1 |      |
| Coolant capacity (with radiator), L                                     | 10.7    |      |
| Cooling system air flow, m <sup>3</sup> /sec @ 12.7 mm H <sub>2</sub> O | 1.611   |      |
| Total heat rejection, Btu/min   | 1744    | 1560 |
| Maximum cooling air flow static restriction, mm H <sub>2</sub> O        | 25.4    |      |

| <b>Weights</b>                      | <b>Open</b> | <b>Enclosed</b> |
|-------------------------------------|-------------|-----------------|
| Unit dry weight, kg (standard skid) | 1019        | 1423            |
| Unit wet weight, kg (standard skid) | 1107        | 1511            |
| Unit dry weight, kg (optional skid) | 1237        | 1640            |
| Unit wet weight, kg (optional skid) | 1325        | 1728            |

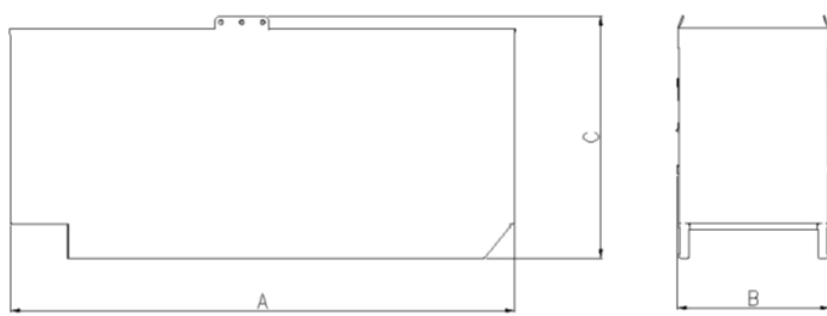
| <b>Dimensions</b>                       | <b>Length</b> | <b>Width</b> | <b>Height</b> |
|---|---------------|--------------|---------------|
| Open set dimensions (standard skid)     | 2050          | 967          | 1510          |
| Enclosed set dimensions (standard skid) | 2270          | 975          | 1920          |
| Open set dimensions (optional skid)     | 2270          | 967          | 1720          |
| Enclosed set dimensions (optional skid) | 2270          | 975          | 2115          |

## Genset outline

### Open set



### Enclosed set



Outlines are for illustrative purposes only. Please refer to the genset outline drawing for an exact representation of this model.

### Alternator data

| Connection <sup>1</sup> | Temp rise °C | Duty <sup>2</sup> | Alternator | Voltage |
|-------------------------|--------------|-------------------|------------|---------|
| Wye, 3-phase            | 163/125      | S/P               | UCI22 4F   | 380-415 |
| Wye, 3-phase            | 150/105      | S/P               | UCI22 4G   | 380-415 |

## Ratings definitions

| Emergency Standby Power (ESP):  | Limited-Time running Power (LTP):  | Prime Power (PRP):   | Base load (Continuous) Power (COP):   |
|---|--|--|---|
| Applicable for supplying power to varying electrical load for the duration of power interruption of a reliable utility source. Emergency Standby Power (ESP) is in accordance with ISO 8528. Fuel Stop power in accordance with ISO 3046, AS 2789 and DIN 6271. | Applicable for supplying power to a constant electrical load for limited hours. Limited-Time Running Power (LTP) is in accordance with ISO 8528. | Applicable for supplying power to varying electrical load for unlimited hours. Prime Power (PRP) is in accordance with ISO 8528. Ten percent overload capability is available in accordance with ISO 3046, AS 2789 and DIN 6271. | Applicable for supplying power continuously to a constant electrical load for unlimited hours. Continuous Power (COP) is in accordance with ISO 8528, ISO 3046, AS 2789 and DIN 6271. |

## Formulas for calculating full load currents:

### Three phase output

$$\frac{\text{kW} \times 1000}{\text{Voltage} \times 1.73 \times 0.8}$$

### Single phase output

$$\frac{\text{kW} \times \text{SinglePhaseFactor} \times 1000}{\text{Voltage}}$$

For more information contact your local Cummins distributor or visit [power.cummins.com](http://power.cummins.com)

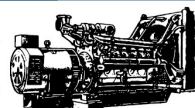


**Our energy working for you.™**

©2017 Cummins Inc. All rights reserved. Cummins is a registered trademark of Cummins Inc. PowerCommand, AmpSentry, InPower and "Our energy working for you." are trademarks of Cummins Inc. Other company, product, or service names may be trademarks or service marks of others. Specifications are subject to change without notice. D-6278-EN (10/17)

**PROUDLY 100% AUSTRALIAN OWNED**

**MACFARLANE  
GENERATORS**



**ESTABLISHED 1949**

**VICTORIA (HEAD OFFICE)** REC: 691  
136 Fairbank Road, Clayton South, VIC 3169 Ph: 03 9544 4222 Fax: 03 9543 7138

**NEW SOUTH WALES BRANCH** REC: 261624C  
1 St. James Place, Seven Hills, NSW 2147 Ph: 02 9899 6699 Fax: 02 9899 8048

**QUEENSLAND BRANCH** REC: 72635  
31 South Pine Road, Brendale, QLD 4500 Ph: 07 3205 6333 Fax: 07 3205 6344

PO Box 5176, Clayton, VIC 3168 [www.macfarlanegenerators.com.au](http://www.macfarlanegenerators.com.au) info@macgen.com  
Macfarlane Generators PTY. LTD. ACN 006 849 074 ABN 74 006 849 074