

PROUDLY 100% AUSTRALIAN OWNED

# MACFARLANE GENERATORS

ESTABLISHED 1949

# HIMOINSA

A YANMAR COMPANY

A NEW RANGE OF COMPACT GENERATORS BY HIMOINSA

# HCY COMPACT SERIES

## 6-12 KVA



### 3 MODELS

- Best in Class Power Train
- Large Fuel Tank Capacity
- Low Noise Level



### 3000 RPM

- 250 Hour Service Intervals
- High-quality Compact Design
- Low Fuel Consumption



#### KVA

6 & 9kVA (Single Phase)  
12kVA (Three Phase)

#### PHASES



#### FREQUENCY

50 HZ

3000 RPM

#### STANDARD VOLTAGES

50 HZ

3

50 HZ

1

415/240V

240V

## CONSTRUCTION • MINING • RESIDENTIAL • COMMERCIAL

#### MELBOURNE

136 Fairbank Road  
Clayton South, VIC 3169  
(03) 9544 4222

#### SYDNEY

1 St James Place  
Seven Hills, NSW 2147  
(02) 9899 8048

#### BRISBANE

1 South Pine Road  
Brendale, QLD 4500  
(07) 3205 6344

#### PERTH

1/85 Dixon Road,  
Rockingham, WA 6168  
(08) 9548 7337

info@macgen.com | www.macfarlanegenerators.com.au

## HIMOINSA COMPACT SERIES STANDARD FEATURES:

1. FUEL ACCESIBILITY Fuel filling cap
2. FUEL CONTROL Fuel gauge on roof
3. HANDLING 2 Lifting points to ensure safe lifting and transport.
4. RADIATOR ACCESIBILITY External Access for radiator cooling filling.
5. BEST IN CLASS POWER TRAIN Yanmar engine and MeccAlte alternator.
6. SECURITY Battery isolator switch.
7. ACCESIBILITY / MAINTENANCE Removable door for easy maintenance. Lock with high hardness and tensile strength with key press lock.
8. SECURITY Emergency stop switch.
9. CONNECTIONS AND CONTROL
  - 3 Australian type sockets. IP66
  - RCBO Vigi breakers
  - Battery switch
  - Battery charger (Optional)
  - M7 Digital controller
  - Cubicle door with key locker
10. HANDLING Heavy duty forklift pockets.
11. PROTECTIONS Bunded tray 110% with drain access.
12. PROTECTIONS Air inlet rain Hood to prevent water ingress to the retention tray.

## Easy Maintenance



Removable Door



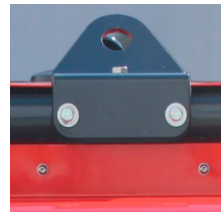
Battery Isolator Switch



External Access



Heavy Duty Forklift Pockets



2 Lifting Points



Environmentally Friendly



**SERVICE INTERVAL**  
 250 hours



		HCY6 M	HCY9 M5	HCY12 T5
Rated Output (COP)	kW / kVA	5,5	8	9 / 11,3
Max Output	kW / kVA	6	8,6	10 / 12,45
Voltage	V	240	240	415
Phase		1	1	3
Engine Speed	rpm	3000		
Engine Model		YANMAR - 3TNM68 HHFCG		
Alternator Model		MeccAlte ECP3 2S/2	MeccAlte ECP3 3S/2	MeccAlte ECP3 3S/2
FOC	l/h	3,8		
Service Interval	hours	250		
Weight	kg	430		
Dimensions (LxWxH)	mm	1529x775x928		
Noise Level	dB(A)	69		
Control System		M7		

Tank Capacity 39L

**MELBOURNE**  
 136 Fairbank Road  
 Clayton South, VIC 3169  
 (03) 9544 4222

**SYDNEY**  
 1 St James Place  
 Seven Hills, NSW 2147  
 (02) 9899 8048

**BRISBANE**  
 1 South Pine Road  
 Brendale, QLD 4500  
 (07) 3205 6344

**PERTH**  
 1/85 Dixon Road,  
 Rockingham, WA 6168  
 (08) 9548 7337