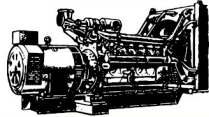




PROUDLY 100% AUSTRALIAN OWNED

**MACFARLANE
GENERATORS**



ESTABLISHED 1949

VICTORIA (HEAD OFFICE) REC: 691
136 Fairbank Road, Clayton South, VIC 3169 Ph: 03 9544 4222 Fax: 03 9543 7138

NEW SOUTH WALES BRANCH REC: 261624C
1 St. James Place, Seven Hills, NSW 2147 Ph: 02 9899 6699 Fax: 02 9899 8048

QUEENSLAND BRANCH REC: 72635
31 South Pine Road, Brendale, QLD 4500 Ph: 07 3205 6333 Fax: 07 3205 6344

PO Box 5176, Clayton, VIC 3168 www.macfarlanegenerators.com.au info@macgen.com
Macfarlane Generators PTY. LTD. ACN 006 849 074 ABN 74 006 849 074

NEW 8.8 kVA HONDA INVERTER GENERATOR

The newest addition to the GENTECH range!

This Australian designed inverter generator is tough, safe, versatile, portable, and reliable.

This inverter generator is safe enough to run all your sensitive equipment and powerful enough to run a huge range of household, recreational and professional equipment. Its NEW inverter technology makes this generator one of the purest power sources around.

INVERTER EP88i
POWERED by **HONDA**

Super Quiet with partial enclosure

Pure Sine Wave Inverter Technology

IP66 Weatherproof outlets

Tough Sturdy Frame

Reliable Honda GX390 engine



POWERED by **HONDA**

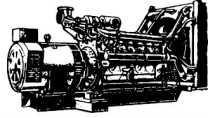
SPECIFICATIONS ARE SUBJECT TO CHANGE WITHOUT NOTICE

POWER ANYWHERE, ANYTIME 1300 MAC GEN (1300 622 436)
SALES, HIRE, SERVICE, SPARES, INSTALLATION, NEW AND USED GENERATORS



PROUDLY 100% AUSTRALIAN OWNED

**MACFARLANE
GENERATORS**



ESTABLISHED 1949

VICTORIA (HEAD OFFICE) REC: 691
136 Fairbank Road, Clayton South, VIC 3169 Ph: 03 9544 4222 Fax: 03 9543 7138

NEW SOUTH WALES BRANCH REC: 261624C
1 St. James Place, Seven Hills, NSW 2147 Ph: 02 9899 6699 Fax: 02 9899 8048

QUEENSLAND BRANCH REC: 72635
31 South Pine Road, Brendale, QLD 4500 Ph: 07 3205 6333 Fax: 07 3205 6344

PO Box 5176, Clayton, VIC 3168 www.macfarlanegenerators.com.au info@macgen.com
Macfarlane Generators PTY. LTD. ACN 006 849 074 ABN 74 006 849 074

8.8kVA INVERTER GENERATOR

TECHNICAL SPECIFICATIONS

**POWERED by
HONDA™**

**ENGINE
GENERATOR
OTHER**

- **Engine** : Honda GX390
- **Type** : 4-stroke, single cylinder
- **Start System** : Recoil
- **Fuel Type** : Unleaded Petrol
- **Oil Type** : 15W-30

- **Rated Frequency** : 50 Hz
- **Rated Voltage** : 240 V
- **Max. Output** : 8.8 kVA

- **Fuel Tank Capacity** : 6.1 L
- **Noise Level** : 74 dBA/7m
- **Dimensions (LxWxH)** : 680 x 525 x 546 mm
- **Weight** : 88 kg



INVERTER EP88i
POWERED by HONDA™

SPECIFICATIONS ARE SUBJECT TO CHANGE WITHOUT NOTICE

POWER ANYWHERE, ANYTIME 1300 MAC GEN (1300 622 436)
SALES, HIRE, SERVICE, SPARES, INSTALLATION, NEW AND USED GENERATORS